



LeMatic
Cooler to the door

Dough Imprinters

Heavy-Duty Registered & Random

LeMatic Dough Imprinters are designed to stand up to the rigors of high-volume production, while still producing clear impressions on your bun or roll products. Efficient design and construction yield an economical and easy-to-use Imprinter that will fit your existing Moulder Table. UHMW rollers reduce and may even eliminate the need for flour dusting, resulting in substantial flour savings. LeMatic Imprinters are readily available in a variety of standard Moulder Table widths and imprint patterns. Custom sizes and patterns are available.

FEATURES

- Easy to set up and take down from your existing Moulder Table
- Adjustable imprint depth
- Adjustable motor speed
- Individual adjustable rollers
- UHMW roller provides sanitary, nonstick imprinting
- Spiral brush continuously cleans roller for nonstop reliable operation
- Durable construction and safety-conscious design

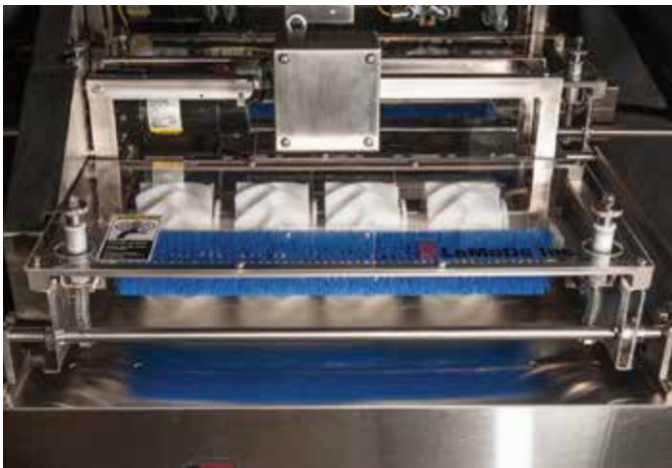


Photo illustrates the variety of registered imprints available.

4-POCKET RANDOM ADJUSTABLE IMPRINTER

Models BM100230,
BM100232, BM100242



*"Tractor Tread"
(Random Pattern)*

6-POCKET REGISTERED ADJUSTABLE IMPRINTER

Model BM100240,
BM100233, BM100241



*"Kaiser"
(Registered Pattern)*



*Discharge Side of
Random Imprinter*

HAND STAMP MODELS ARE ALSO AVAILABLE

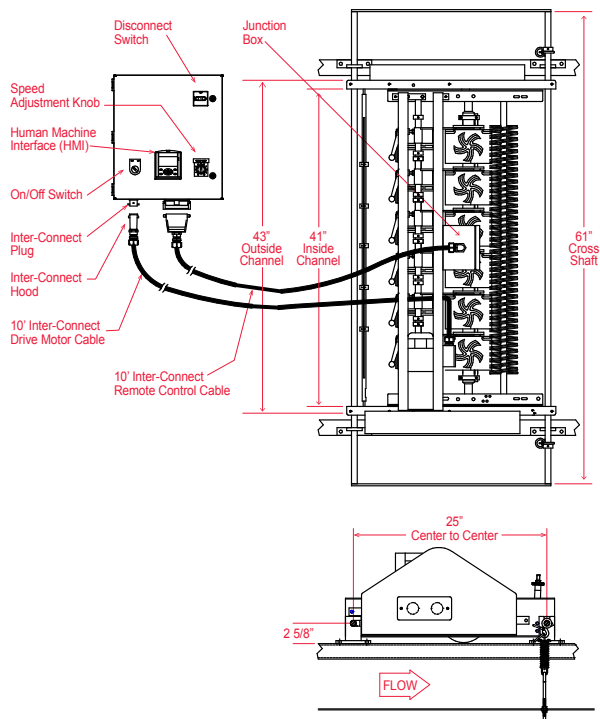


CUSTOM DOUGH IMPRINT SERVICES

When the occasion calls for something beyond the ordinary, LeMatic can design an imprint to suit any requirement. Call a LeMatic sales professional to find out more.



Heavy-Duty Registered & Random Dough Imprinters



Registered Adjustable Imprinters

Models BM100240, BM100233 & BM100241

GENERAL SPECIFICATIONS:

- Production Rate: 125 cuts per minute per lane
- Electrical Controls: Remote panel with 10' cord and connector
- Connected Load: 1.4 KVA, 110 Volt 60Hz 1 Ph. (Other voltages available)
- Mounting Requirements: 25" [635mm] Standard C/C mounts on the Moulder Table
- Heavy Duty Construction with 2" [51mm] shaft with 6" UHMW roller
- UL, CUL/CSA, CE compliance

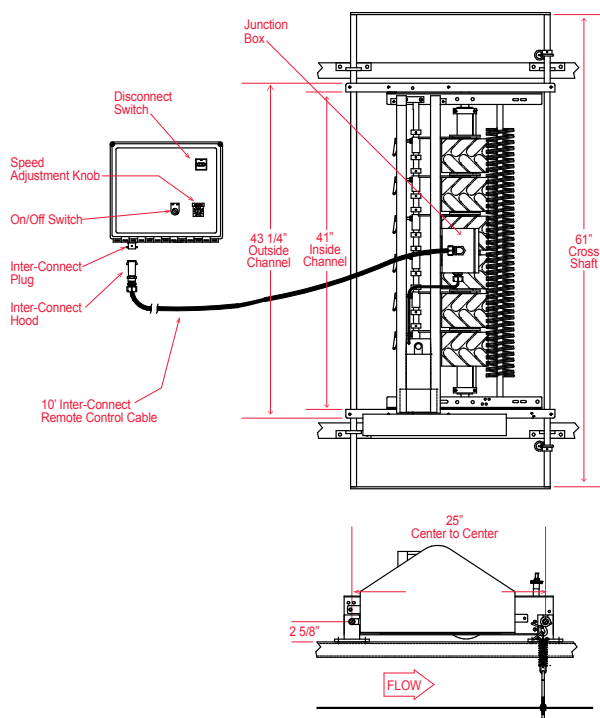
	4-Pocket	6-Pocket	8-Pocket
Adjustable:	BM100240	BM100233	BM100241
	In. [mm]	In. [mm]	In. [mm]
"A" Width:	29.75" [755]	41" [1041]	48.5 [1232]
"B" Width	32" [813]	43.25" [1098]	50.75" [1289]

Random Adjustable Imprinters

Models BM100230, BM100232 & BM100242

GENERAL SPECIFICATIONS:

- Production Rate: Varies with product. Adequate for most automated requirements
- Electrical Controls: Remote panel with 10' cord and connector
- Connected Load: 1.4 KVA (6 & 8-Pocket), 110 Volt 60Hz 1 Ph. (Other voltages available)
- Mounting Requirements: 25" [635mm] Standard C/C mounts on the Moulder Table
- Heavy Duty Construction with 2" [51mm] shaft with 6" UHMW roller
- UL, CUL/CSA, CE compliance



	4-Pocket	6-Pocket	8-Pocket
Adjustable:	BM100230	BM100232	BM100242
	In. [mm]	In. [mm]	In. [mm]
"A" Width:	28.75" [730]	41" [1041]	48.5 [1232]
"B" Width	31" [787]	43.25" [1098]	50.75" [1289]



LeMatic
Cooler to the door